



ELEVATION A



ELEVATION B



ELEVATION C

### CHOICES

We offer a variety of flexible floor plans and top-quality features at a price point you'll love.

### QUALITY

Our dedication to quality can be seen in our superior craftsmanship as we strive to be the best home builder in Omaha.

### SIMPLE

Our homebuilding and customer service processes are straightforward and dedicated to you.

### ENERGY-EFFICIENT

Trust The Home Company to build your energy-efficient home and enjoy peace of mind knowing that we have some of the lowest Home Energy Rating Service (HERS) scores in Omaha's history.

YORK

9719 Giles Road | La Vista, NE 68128  
402.884.4854 | [thehomecompanyomaha.com](http://thehomecompanyomaha.com)



# YORK

2-STORY HOME | 2,158 SF  
4 BEDROOMS | 2.5 BATHROOMS  
FINISHED BASEMENT OPTIONS

## AWESOME INCLUDED FEATURES

Some of the Lowest HERS Ratings in Omaha's History

R50 Attic Insulation

James Hardie Siding and Trim

Vulkem Commercial Grade Caulking

Designer Preferred Sherwin Williams Paint

Engineered Floor, Roof Trusses, and Wall Panels

VCC Floors in Kitchen, Entry, and Drop Zone

Large Picture Windows

Gas Fireplace with Custom Design Choices

Quartz Kitchen Countertops

Birch Cabinetry

Kitchen Tile Backsplash

Stainless Steel Appliances

Hidden Kitchen Pantry (per plan)

Your Choice of Electric or Gas Range

Quartz Bathroom Countertops

Tiled Owner's Bath Shower Walls

Drop Zone with Several Layout Choices

Black Metal Spindles on Staircase (per plan)

6 lb. Carpet Pad

## VISIT OUR MODEL HOMES

SATURDAY AND SUNDAY FROM 1 – 5 PM

THE EDISON  
7304 North 168th Avenue  
Bennington, NE 68007

THE MALIBU  
4611 Lawnwood Drive  
Papillion, NE 68133

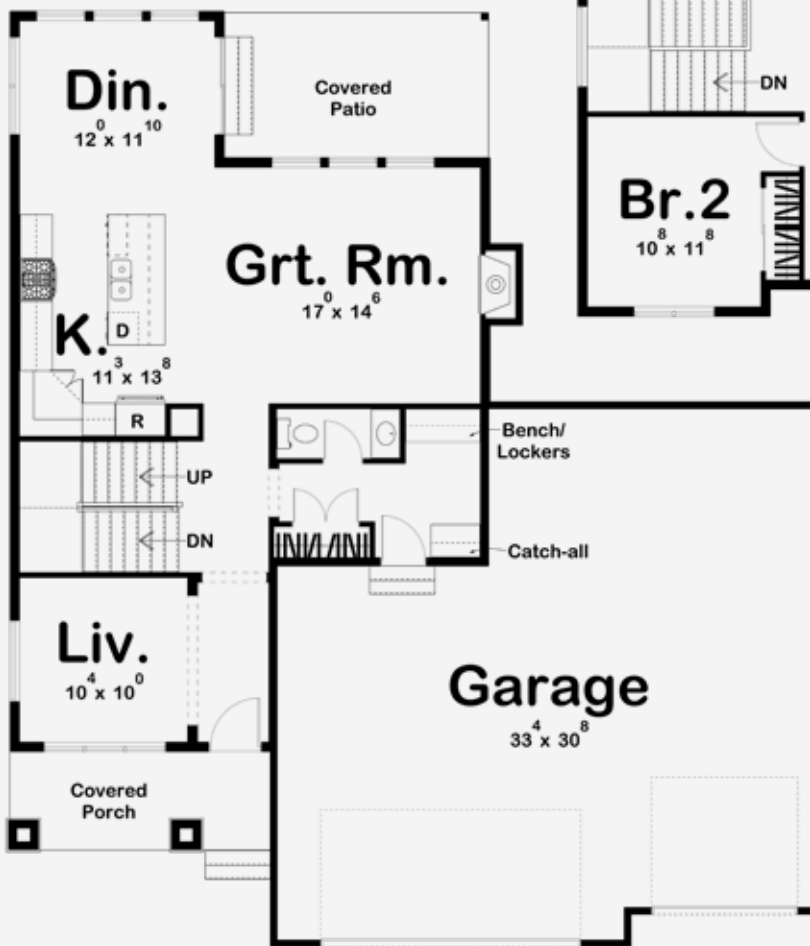
THE SANTA CLARA  
8205 South 196th Street  
Gretna, NE 68028

THE ELLISON  
11805 S 110th Avenue  
Papillion, NE 68046

SATURDAY AND SUNDAY FROM 1 – 3 PM

THE REILLY - TOWNHOMES AT GALLERY 23  
2264 Aaron Way  
Fremont, NE 68025

MAIN LEVEL



Owner's Suite  
13 x 14  
9'-0" Ceiling

Br.3  
10 x 10

Br.4  
11 x 10

SECOND LEVEL