



THE HOME COMPANY

A HUBBELL AFFILIATE



### CHOICES

We offer a variety of flexible floor plans and top-quality features at a price point you'll love.

### QUALITY

Our dedication to quality can be seen in our superior craftsmanship as we strive to be the best home builder in Omaha.

### SIMPLE

Our homebuilding and customer service processes are straightforward and dedicated to you.

### ENERGY-EFFICIENT

Trust The Home Company to build your energy-efficient home and enjoy peace of mind knowing that we have some of the lowest Home Energy Rating Service (HERS) scores in Omaha's history.

ROCKWELL

9719 Giles Road | La Vista, NE 68128  
402.884.4854 | [thehomecompanyomaha.com](http://thehomecompanyomaha.com)



# ROCKWELL

1,470 SQ FT

3 BEDROOMS | 2.5 BATHROOMS

## AWESOME INCLUDED FEATURES

Some of the Lowest HERS Ratings in Omaha's History

R50 Attic Insulation

Low Maintenance Vinyl Siding and Trim

Designer Preferred Sherwin Williams Paint

Engineered Floor, Roof Trusses, and Wall Panels

Large Family Room Windows

Laminate Kitchen Countertops

Birch Cabinetry

Stainless Steel Appliances

Stainless Steel Electric Range

Laminate Bathroom Countertops

Dual Vanity in Owner's Bath

Walk-in Closets (per plan)

Second Story Laundry

6 lb. Carpet Pad

Front Porch

Attached Two Car Garage

## VISIT OUR MODEL HOMES

SATURDAY AND SUNDAY FROM 1 – 5 PM

### THE EDISON

7304 North 168th Avenue  
Bennington, NE 68007

### THE MALIBU

4611 Lawnwood Drive  
Papillion, NE 68133

### THE SANTA CLARA

8205 South 196th Street  
Gretna, NE 68028

### THE ELLISON

11805 S 110th Avenue  
Papillion, NE 68046

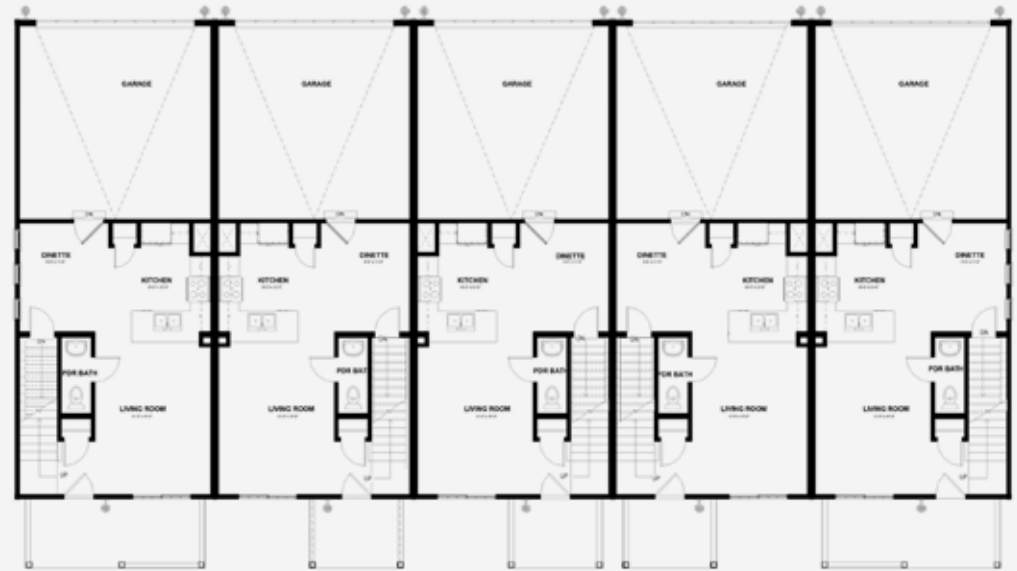
SATURDAY AND SUNDAY FROM 1 – 3 PM

THE REILLY - TOWNHOMES AT GALLERY 23

2264 Aaron Way  
Fremont, NE 68025

Artist rendering may vary from plan. Prices, elevations, and floor plans may be subject to change, see sales associate for details 10/2021.

MAIN LEVEL



UPPER LEVEL



OPTIONAL LOWER LEVEL FINISH

